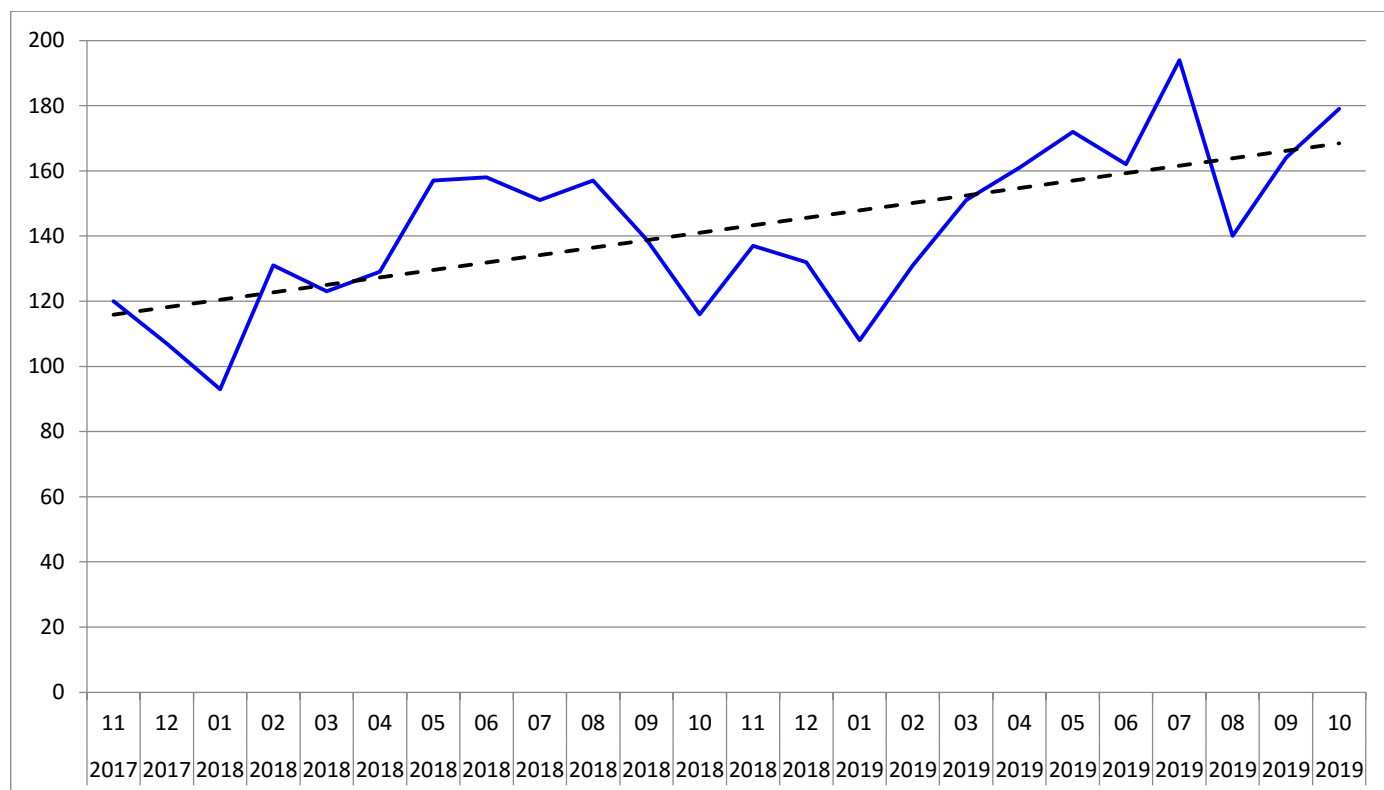


Total Hate Crimes – 12 months ending October 19

Trend Chart



Volumes by month and LPU

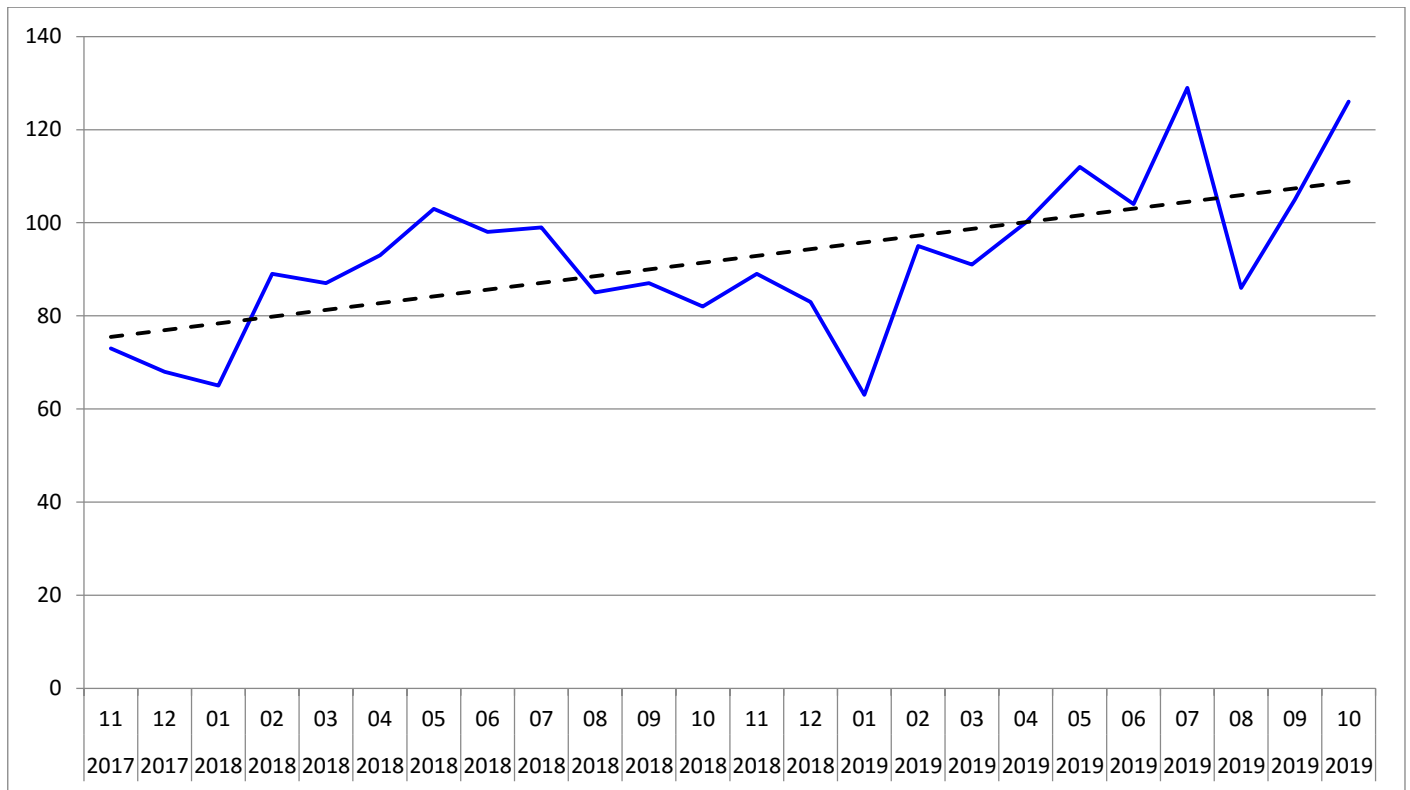
		CHESTER	CREWE	ELLESMERE PORT	MACCLESFIELD	NORTHWICH	RUNCORN	WARRINGTON	WIDNES	zz_NO LOCATION	zz_OOF	TOTAL
2018	11	21	15	10	22	7	13	43	6			137
2018	12	22	15	6	14	12	18	35	9	1		132
2019	01	19	15	11	14	4	16	16	11		2	108
2019	02	25	23	8	22	11	7	27	8			131
2019	03	27	22	15	17	15	15	25	10	5		151
2019	04	22	29	17	22	8	11	39	11	2		161
2019	05	24	32	13	24	10	8	44	14	3		172
2019	06	14	26	17	30	6	15	36	18			162
2019	07	29	34	10	27	10	14	50	13	7		194
2019	08	20	26	12	13	11	9	41	5	3		140
2019	09	20	23	10	24	17	6	50	12	2		164
2019	10	29	26	10	41	5	9	46	9	4		179
	TOTAL	504	582	282	495	222	260	799	233	32	3	3,412

The total number of recorded hate crimes for the 12 month period ending October 2019 increased by 16% (+250 hate crimes) compared to the 12 months ending October 2018. The largest percentage increase by Local Policing Unit was in Warrington which saw a 30% increase (+105 hate crimes). In terms of the specific 'offence' types the most frequent hate offence during the 12 months ending October 2019 related to causing 'public fear alarm or distress' (59%).



Racial Hate Crimes – 12 months ending October 19

Trend Chart



Volumes by month and LPU

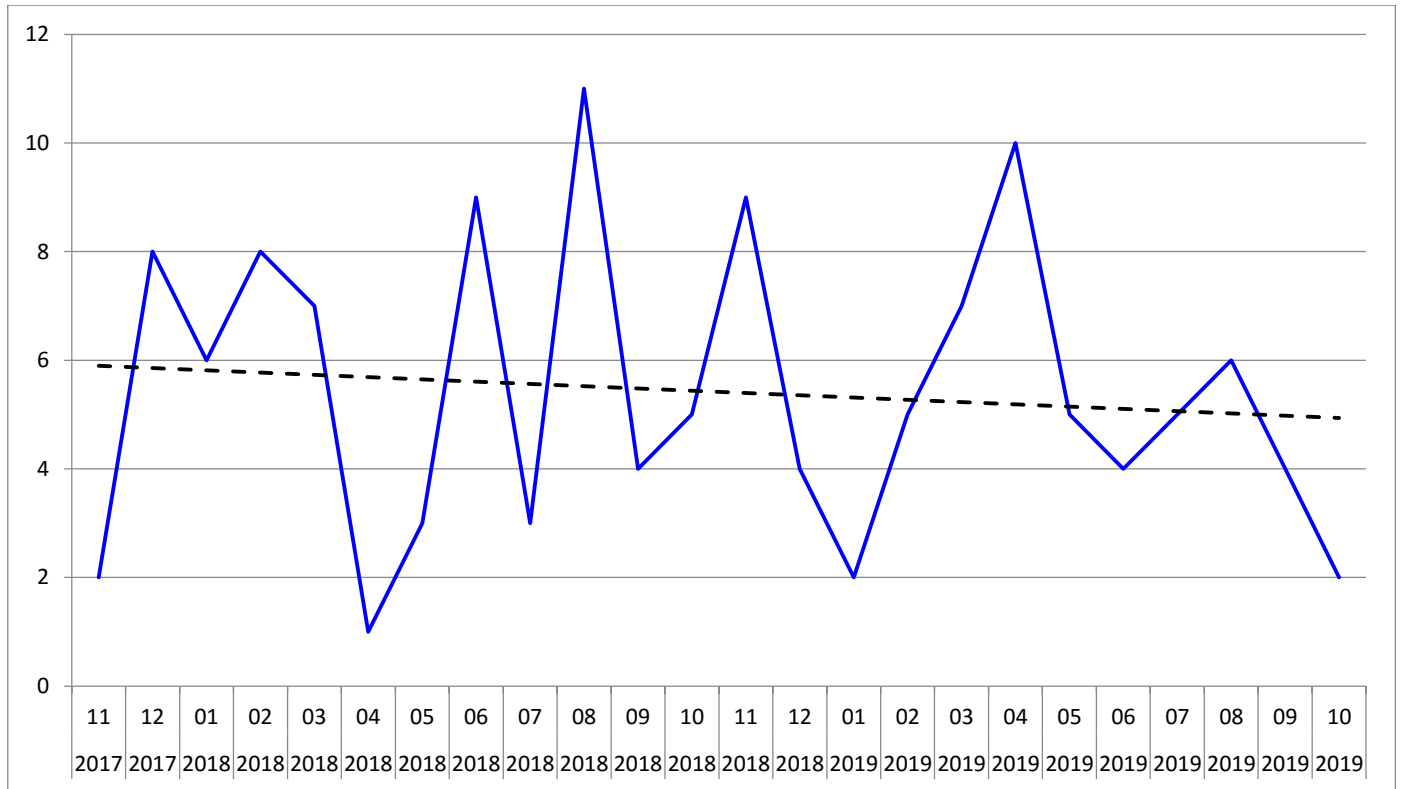
		CHESTER	CREWE	ELLESMERE PORT	MACCLESFIELD	NORTHWICH	RUNCORN	WARRINGTON	WIDNES	zz_NO LOCATION	TOTAL
2018	11	13	12	9	15	2	4	28	6		89
2018	12	14	10	4	12	7	5	22	8	1	83
2019	01	12	13	9	7	3	5	10	4		63
2019	02	19	14	6	19	9	4	18	6		95
2019	03	13	15	8	12	8	9	18	7	1	91
2019	04	16	20	9	11	5	6	25	7	1	100
2019	05	15	25	10	14	6	6	30	4	2	112
2019	06	12	17	8	21	2	9	23	12		104
2019	07	22	19	7	13	7	6	38	11	6	129
2019	08	13	17	7	6	7	3	28	2	3	86
2019	09	14	16	6	12	11	2	35	7	2	105
2019	10	18	18	7	28	3	6	36	7	3	126

The number of recorded racial hate crimes for the 12 month period ending October 2019 increased by 15% (+154 hate crimes) compared to the 12 months ending October 2018. The largest percentage increase by Local Policing Unit was in Warrington which saw a 42% increase (+92 hate crimes). In terms of the specific 'offence' types the most frequent racial hate offence during the 12 months ending October 2019 related to causing 'public fear alarm or distress' (65%).



Religion or Belief Hate Crimes – 12 months ending October 19

Trend Chart



Volumes by month and LPU

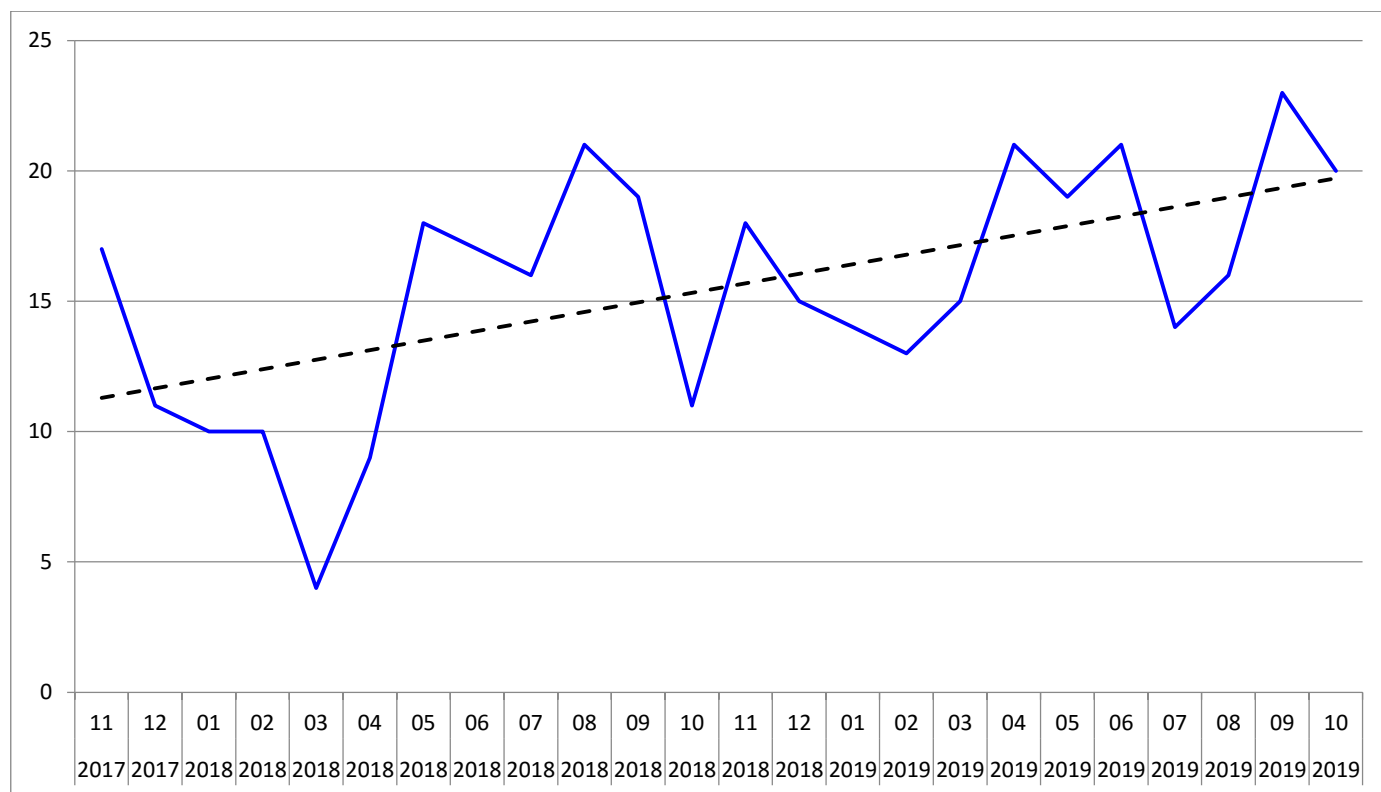
		CHESTER	CREWE	ELLESMERE PORT	MACCLESFIELD	NORTHWICH	RUNCORN	WARRINGTON	WIDNES	TOTAL
2018	11	1	2		3		3			9
2018	12							4		4
2019	01				1				1	2
2019	02				1		1	2	1	5
2019	03	2	1	1		1	1	1		7
2019	04	1	1	3	3	1		1		10
2019	05	1	2		1			1		5
2019	06		1	1			1	1		4
2019	07	1			1		1	2		5
2019	08	1	1				2	2		6
2019	09				1	1		2		4
2019	10		2							2

The number of recorded religion or belief hate crimes for the 12 month period ending October 2019 decreased by 6% (-4 hate crimes) compared to the 12 months ending October 2018. However 4 LPUs recorded an increase compared to the previous 12 months. In terms of the specific 'offence' types the most frequent religion or belief hate offence during the 12 months ending October 2019 related to causing 'public fear alarm or distress' (52%).



Disability Hate Crimes – 12 months ending October 19

Trend Chart



Volumes by month and LPU

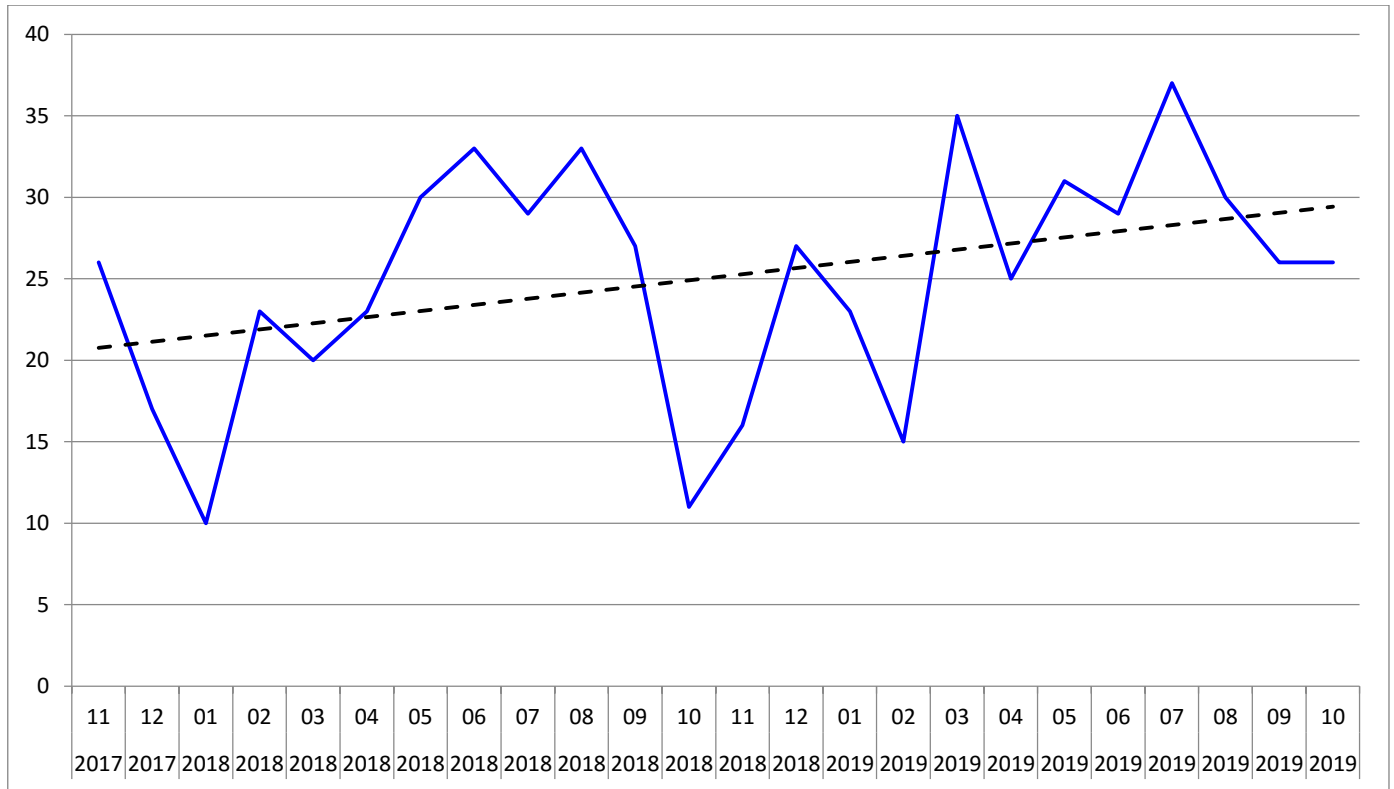
		CHESTER	CREWE	ELLESMERE PORT	MACCLESFIELD	NORTHWICH	RUNCORN	WARRINGTON	WIDNES	zz_NO LOCATION	TOTAL
2018	11	3	1	1	1	1	2	9			18
2018	12	3	2	2	1	2	2	2	1		15
2019	01	2	1	1		1	4	3	2		14
2019	02	1	4	1	1	1	1	3	1		13
2019	03	2	1	2	1	3	2	2	1	1	15
2019	04	2	2	2	4	1	1	4	4	1	21
2019	05	2	3	2	4	1	1	1	5		19
2019	06	1	1	5	3	3	4	3	1		21
2019	07	3	2	2		2	1	3		1	14
2019	08	1	5	1		1	1	5	2		16
2019	09	3	3	2	5	2	3	2	3		23
2019	10	5	2	2	5		1	5			20

The number of recorded disability hate crimes for the 12 month period ending October 2019 increased by 28% (+46 hate crimes) compared to the 12 months ending October 2018. The largest percentage increase by Local Policing Unit was in Chester which saw a 133% increase (+16 hate crimes). In terms of the specific 'offence' types the most frequent disability hate offence during the 12 months ending October 2019 related to causing 'public fear alarm or distress' (47%).



Sexual Orientation Hate Crimes – 12 months ending October 19

Trend Chart



Volumes by month and LPU

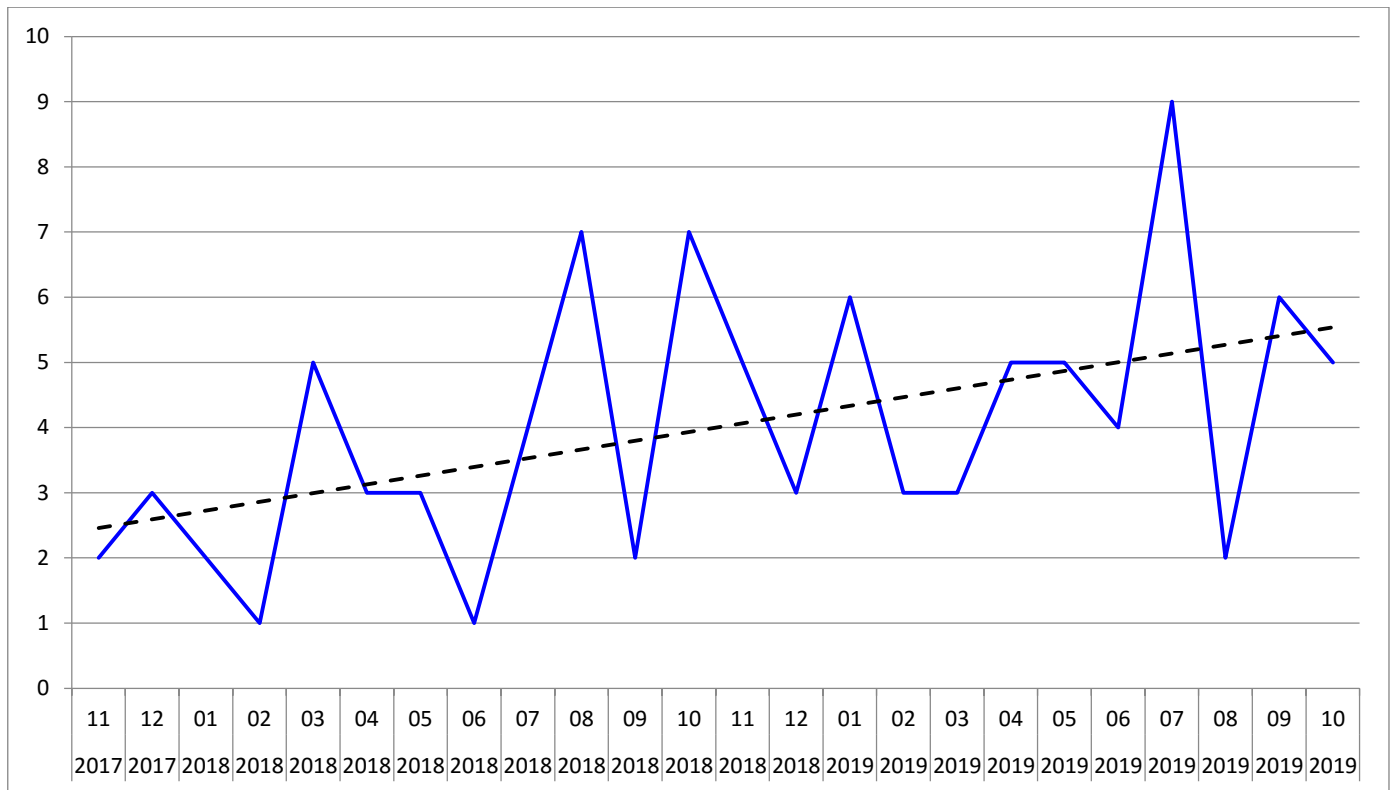
		CHESTER	CREWE	ELLESMERE PORT	MACCLESFIELD	NORTHWICH	RUNCORN	WARRINGTON	WIDNES	zz. NO LOCATION	TOTAL
2018	11	4			3	3	1	5			16
2018	12	3	3			3	11	7			27
2019	01	4	1	1	5		6	3	3		23
2019	02	5	5		1	1	1	2			15
2019	03	9	5	4	4	2	3	4	2	2	35
2019	04	3	6	3	2	1	4	6			25
2019	05	5	2	1	4	3	1	10	5		31
2019	06	1	5	3	4	1	1	9	5		29
2019	07	3	10	1	9		5	7	2		37
2019	08	5	3	4	6	3	3	5	1		30
2019	09	3	3	2	5	3		8	2		26
2019	10	6	4	1	4	1	2	5	2	1	26

The number of recorded sexual orientation hate crimes for the 12 month period ending October 2019 increased by 13% (+38 hate crimes) compared to the 12 months ending October 2018. The largest percentage increase by Local Policing Unit was in Macclesfield which saw a 52% increase (+16 hate crimes). In terms of the specific 'offence' types the most frequent sexual orientation hate offence during the 12 months ending October 2019 related to causing 'public fear alarm or distress' (52%).



Transgender Hate Crimes – 12 months ending October 19

Trend Chart



Volumes by month and LPU

		CHESTER	CREWE	ELLESMERE PORT	MACCLESFIELD	NORTHWICH	RUNCORN	WARRINGTON	WIDNES	zz_NO LOCATION	zz_OOF	TOTAL
2018	11					1	3	1				5
2018	12	2			1							3
2019	01	1			1		1		1		2	6
2019	02			1				2				3
2019	03	1				1				1		3
2019	04				2			3				5
2019	05	1			1			2		1		5
2019	06		2		2							4
2019	07		3		4	1	1					9
2019	08				1			1				2
2019	09		1		1		1	3				6
2019	10				4	1						5

The number of recorded transgender hate crimes for the 12 month period ending October 2019 increased by 40% (+16 hate crimes) compared to the 12 months ending October 2018. The largest percentage increase by Local Policing Unit was in Northwich which saw a 300% increase (+3 hate crimes). In terms of the specific 'offence' types the most frequent transgender hate offence during the 12 months ending October 2019 related to causing 'public fear alarm or distress' (30%).

